

# Glidermatic GTS Optima

## Setting Door Travel Limits

The following instructions demonstrate how to set the travel limits of your Gliderol Sectional door. Setting your door travel limits is a vital part of the initial setup of your Glidermatic GTS Optima operator. This communicates to the operator the specific distance it must travel to complete an open/close cycle. All steps must be completed in quick succession to prevent the unit from exiting Limit setup mode.

### IMPORTANT - READ BEFORE PROCEEDING

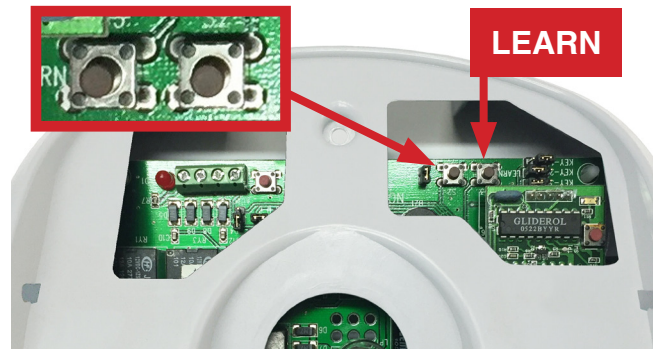
Your 'Adjust' & 'Learn' or 'Limit' buttons will be located in one of the two positions shown, depending on the age of your unit. Please refer to overside for alternate instructions.

#### Step 1:



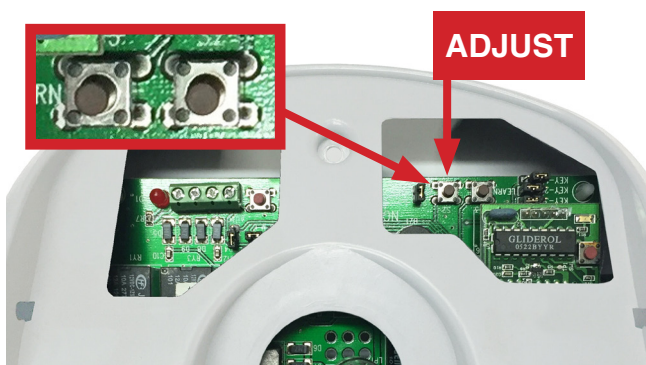
Carefully remove the light cover by pulling down on the tab near the front of the unit.

#### Step 2:



Press and hold the 'Learn' button for three seconds. The unit will beep three times to confirm the unit is in learn mode.

#### Step 3:



Press and hold the 'ADJ' button (located next to the 'Learn' button) until the door travels to the desired open position. Press 'Learn' once to save this position in the units memory. Unit will beep twice to confirm. Repeating this process, press and hold the 'ADJ' button until the door reaches the desired close position. Press the 'Learn' button to save.

### Your travel limit setup is now complete!



Once limits are set the unit will automatically perform a full calibration cycle. When the door is closed after calibration, the limits are successfully setup and your door ready to use.

# Glidermatic GTS Optima

## Setting Door Travel Limits cont...

The following instructions demonstrate how to set the travel limits of your Gliderol Sectional door. Setting your door travel limits is a vital part of the initial setup of your Glidermatic GTS Optima operator. This communicates to the operator the specific distance it must travel to complete an open/close cycle. All steps must be completed in quick succession to prevent the unit from exiting Limit setup mode.

### IMPORTANT - READ BEFORE PROCEEDING

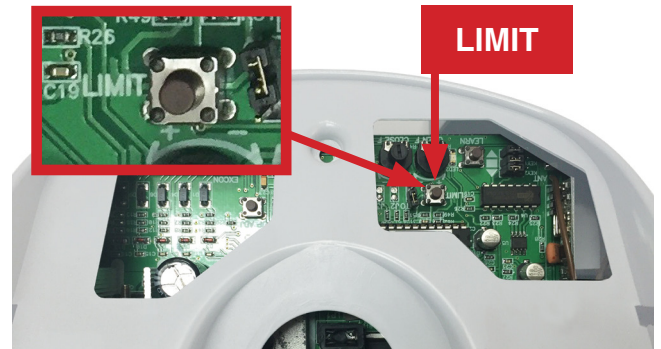
Your 'Adjust' & 'Learn' or 'Limit' buttons will be located in one of the two positions shown, depending on the age of your unit. Please refer to overside for alternate instructions.

#### Step 1:



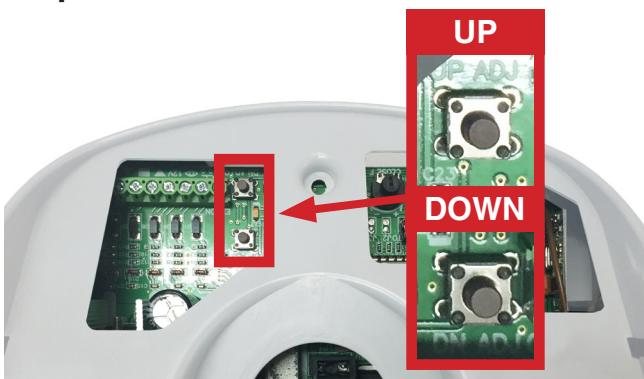
Carefully remove the light cover by pulling down on the tab near the front of the unit.

#### Step 2:



Press and hold the 'Limit' button for three seconds. The unit will beep three times to confirm the unit is in limit setting mode.

#### Step 3:



Press and hold the 'UP ADJ' button until the door travels to the desired open position. Press 'Limit' once to save this position in the units memory. Unit will beep twice to confirm. Repeating this process, press and hold the 'DN ADJ' button until the door reaches the desired close position. Press the 'Learn' button to save.

### Your travel limit setup is now complete!



Once limits are set the unit will automatically perform a full calibration cycle. When the door is closed after calibration, the limits are successfully setup and your door ready to use.